

S C H Ü S S L E R

# CODE CHIP

BASIS OF DIGITALISATION



MADE IN GERMANY

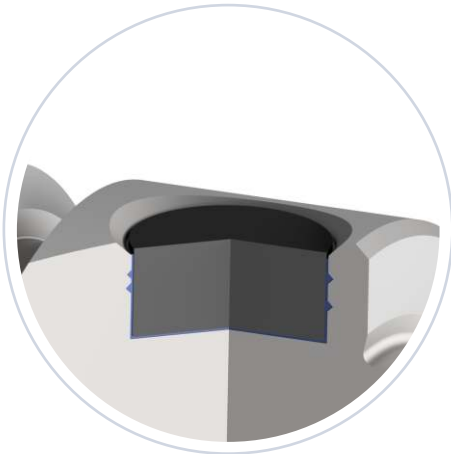


[www.k-schuessler.de](http://www.k-schuessler.de)

**sk**  
the  $\mu$ -maker  
**SCHÜSSLER**

# SCHÜSSLER CODE CHIP

The Schüssler Code Chip is the basis for a holistic integration of your tool holders into your digital production. It makes the tool identification and the compatibility with various tool management software comfortable and simple. Due to the V shaped grooves in the pockets, the chip will adhere even at the highest speeds of production and furthermore has also a high wear resistance.



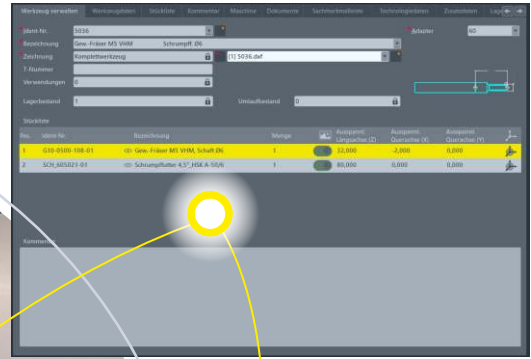
**Chip pockets with V shaped grooves** guarantees a firm hold even at highest speeds of production.

Subsequent fine balancing ensures a **balancing quality of G2,5 @ 25.000 RPM** or **U < 1 gmm**



**The Code Chip can be read with a QR reader.** Consequently, the tool holder can clearly be identified in a tool management software.





**The Code Chip is available for the following tool holders as standard:**

- HSK-A DIN 69893 / ISO 12164
- SK DIN 69871 / ISO 7388-1
- PSC (CORUM) ISO 26623-1

For many other tool holders, the Code Chip is available as a special article



MADE IN GERMANY

**Your benefits**

- µ Compatible with nearly any tool management software
- µ High contrast of the Code Chip guarantees simple reading of the QR-Code
- µ Tool identification without risk of confusion
- µ Limitation of crashes in your production



## SCHÜSSLER Tool Holding Systems – Your Lead in Production!



MADE IN GERMANY

### Brilliant performance from Bodelshausen

For over 50 years, we, the Schüssler company, have been manufacturing our tool holders exclusively in Bodelshausen. Today we are one of the leading manufacturers and enjoy an excellent reputation worldwide. Our products are manufactured at the highest quality level.

We guarantee the durability of our tool holders and offer an excellent price-performance ratio. Our experienced sales team is always at your disposal providing a friendly, committed and competent service.

### Our product range (excerpt):

- Collet chucks-ER and ER “Mini”
- HAWK EYE® HPC-Precision ER-collet chucks and HAWK EYE “Mini”
- Shrink fit chucks 4,5° and 3° (slim)
- Endmill holders Weldon
- Tool holders with coolant for “Cool Tool” version
- Shell mill holders
- Shrink fit machines + accessories

Our tool holders are available in all standard taper shanks, such as:

- HSK-A 40/50/63/80/100
- HSK-E 32/40/50 and HSK-F 63
- SK 40 and 50 DIN 69871 Form AD/B
- MAS BT 30/40/50 and BT with double contact BTD 30/40
- Polygon shank “CORUM” C4/5/6/8

All types of tool holders are generally available in various lengths and are always fine-balanced G 2,5 at 25.000 min<sup>-1</sup>.

Karl Schüssler GmbH & Co. KG  
Bahnhofstraße 108  
D-72411 Bodelshausen  
Phone: +49 74 71 / 95 90-0  
info@k-schuessler.de



**sk**  
the  $\mu$ -maker  
**SCHÜSSLER**